

SKANO

FURNITURE

SKANO CLASSIC

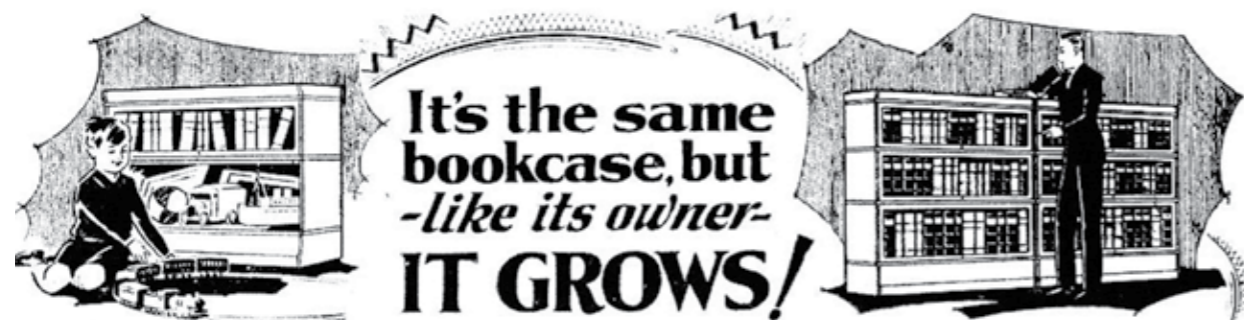


www.skano.com

History of Skano bookcases

In 1882 in Cincinnati, an American businessman Henry C. Yeiser founded a furniture factory, the Globe Files Co., producing furniture for offices and libraries. Around the same time, another furniture factory, the Wernicke Co., was established in Grand Rapids in Michigan. A couple of years after, the Wernicke Co. developed a bookcase model which consisted of interlocking, modular units of different sizes. These elements created different complete sets when placed on top of, or next to, each other. This model fascinated Henry C. Yeiser and he acquired the Wernicke Co. factory. The latter was renamed the Globe Wernicke Co. after its new owner. In December 1892, Henry C. Yeiser acquired a patent for this unique bookcase system. The bookcase system turned out to be a true success story and attracted interested in Europe as well. After the expiry of the patent, many other furniture manufacturers started producing a similar model. The major producers in Europe included Shannon Registrator, Minty and Gunn in England, Aug. Zeiss & CO (later Zeiss Union) and Soennecken in Germany, and Lingel in Hungary.

In Finland, Billnäs Bruks Ab started the manufacture of American style office furniture in 1909. The Globe Wernicke bookcase system played a major role in that product range. The manufacture of American style office furniture was discontinued in the 1960s and the furniture factory with such long traditions was closed.

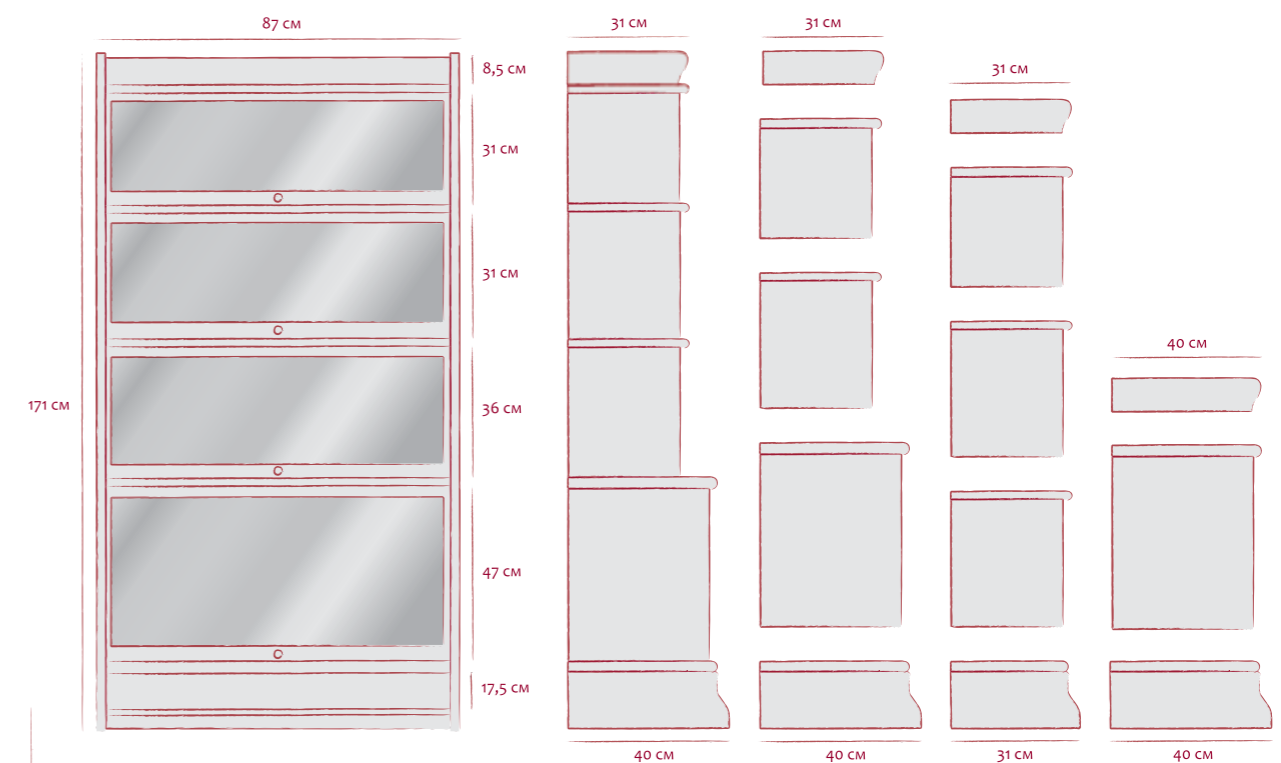


An old bookcase advertisement. Picture: The Globe Wernicke Co., Cincinnati, USA.

The bookcases today

The story of one of the most unconventional bookcase systems in history continued in 1994. The dimensions, production methods and materials were taken over from the Billnäs Bruk's historic originals.

The Skano bookcase system has gained popularity among book lovers and furnishers in Europe and elsewhere, largely owing to the quality of the units and the fact that its elements can be easily combined. The modules are constructed at the factory and can be placed on top of, or next to, each other to create the desired size and effect. The design can always be supplemented or rearranged.



Please visit the SKANO 3D Room Planner on our website www.skano.com. The Skano Classic line furniture planning program allows you to easily design and furnish a room with your custom measures.

Wide range of use

Skano modules come with either glass or wooden doors, and include drawers of different sizes. Additional shelves, fitted inside the modules, can be installed at the desired height.

The standard width of shelf and drawer modules is 87 cm and standard heights include 31, 36 and 47 cm to fit the different base and top elements of corresponding sizes.

The Skano modules can be combined to range from a standalone shelf in the entrance hall to a library which fills an entire room.



Traditional materials

Today, Skano furniture is manufactured from solid birch, blockboard and plywood using modern technology.

The furniture comes in three standard shades – dark brown, light brown and chestnut stain. Special finishes available include antique white, white, blue, grey, green paint, plus mocca, oak, mahogany, black and wood wash stain.

The sanded surface is stained and then varnished twice. This makes the surfaces durable and easy to maintain.



Contemporary and classical

Choosing from different tones of finish and decorative mouldings, and using modern ceiling elements and base frames, you can create a very contemporary design with Skano bookcases. The nickel-plated knob and side moulding add to the contemporary feel of the furniture. The Skano furniture range also includes sleek wall-mounted shelves which can be fitted without a base or lateral section.





SKANO CLASSIC
living room



Woodwash

Our woodwash finish has a natural clarity and the tinge of grey/green brings nature indoors. Reflecting a growing trend in interior design, the highlighted grain structure of birch is used to create a soft natural touch to the furniture. This finish is considered to be a classic colour for the 21st century, alongside the original dark brown.

The woodgrain ensures that no two pieces of furniture are ever alike, and the special finishing gives an entirely individual look to each piece. The stain finds its way deep into the structure of the wood and does not let minor scratches on the surface show. With a smooth and light overall feel, furniture with the woodwash stain sits well with white painted furniture units, and in traditional or contemporary interiors.



SKANO CLASSIC
library

Extensive possibilities

The Skano furniture range has been developed with our clients' needs in mind. The furniture has, therefore, many different applications and features.

The Skano inner and outer corner elements allow the bookcase units to run from wall to wall using space effectively and creating elegant solutions.

The classic range includes a shelf module to allow bookcase sections to run above doors, windows and other openings. In this way, the bookcases can be designed to achieve the best use of space and a bespoke solution.

Where necessary, the bookcases can also be ordered with lockable doors to provide a higher level of protection for books and other items.

The secretary's module with door provides the perfect workplace in the library or living room, if there is no space for a standalone desk. The Skano base element is also available with a hidden drawer – it opens with a gentle push on the front panel.





Practical and beautiful

The unique glass door, opening up and in, keeps the books on the shelves free from dust and still provides a good overview of everything that the bookcase holds. The glass door can be removed easily for cleaning. Classic brass or nickel knobs add elegance to the finished product.

Books are some of the heaviest items kept on shelves – all Skano shelf modules are specially designed to carry heavy loads.

In addition to the regular module width (87 cm wide), it is possible to order bespoke width sizes to create a combination which fits the size and character of the room to be furnished. You can also add outer corner elements to modules with doors, or leave exposed the classical Skano decorative mouldings – whether black or white, nickel or brass.

Antique white, grey, green and blue paint finishes employ ageing treatment to highlight the elegant features and historical background of the furniture.

Workplaces

The Skano furniture range is more than just a system of bookcases or a library. In addition to the original bookcases, the collection features cabinets, desks, chairs, rotating shelves, and much more.

Despite the growth of digital storage in the home, paper based files and records are still needed. A shelf module with a height of 47 cm has been developed to accommodate these in A4 or banker box folders. This is in addition to the original bookcases with a height of either 31 or 36 cm.

The desks and computer desks are ideal, both for the home and office, supplemented by era-specific chairs, allowing the creation of an elegant study.

Office chairs with ergonomic seats – whether with armrests or without – are comfortable, and match the Skano furniture style. The revolving chair on rubber wheels and with swing-mechanism gives its user complete freedom of movement.

Old photos and drawings have been used in designing Skano desks to reflect the classic and traditional techniques of cabinetmakers as accurately as possible.



The roll top desk features a lockable blind. This beautiful piece of furniture is of a traditional and historically accurate design. The lockable desk has eight drawers and two pull-out panels, ideal for holding documents or a computer mouse. The middle drawer of the desks can be replaced by a pull-out for a keyboard which adds free working space on the desk.

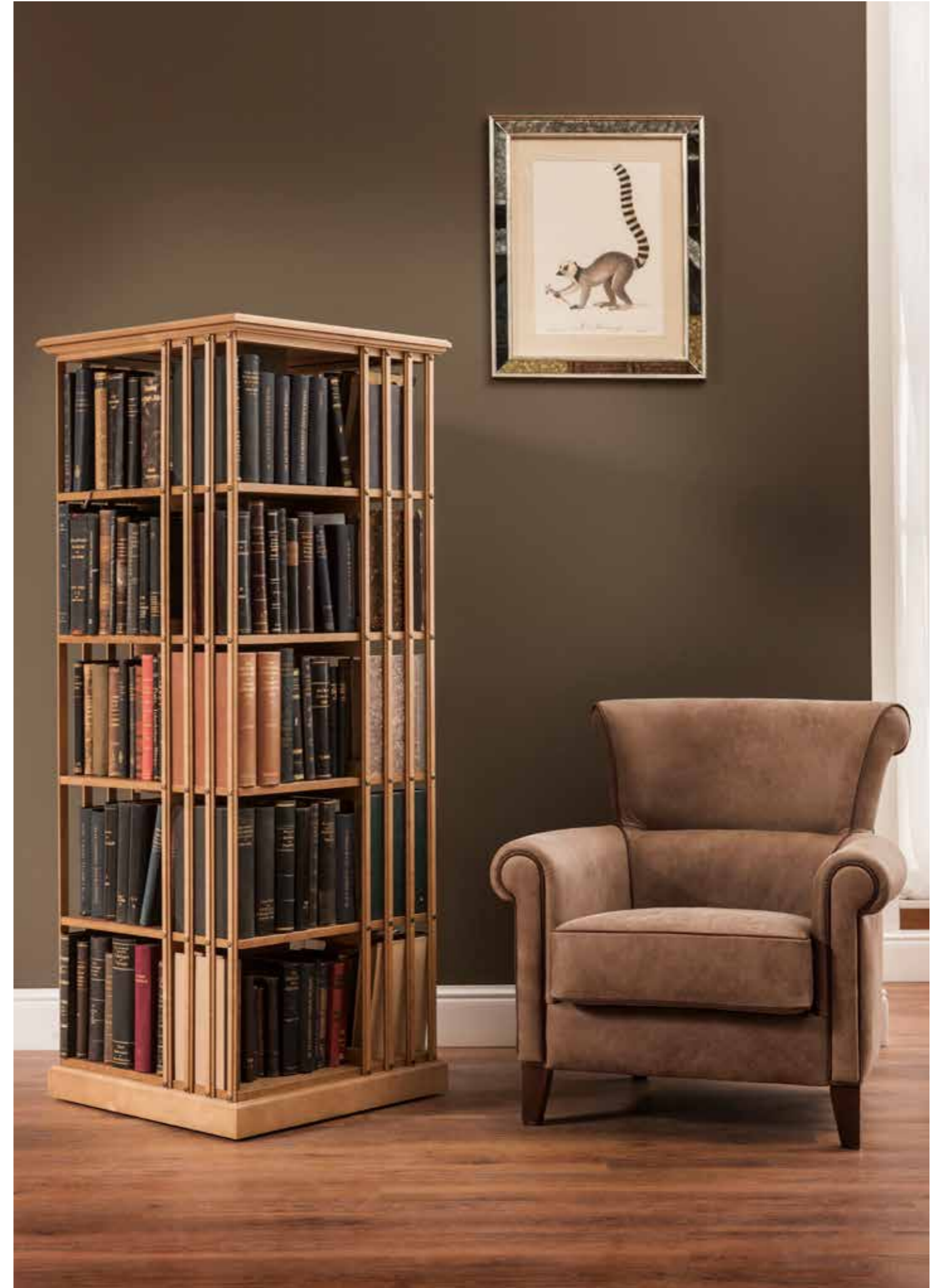
Alongside the desks, the Skano collection features a document cabinet with lockable blind. The drawers and shelves move with ease on high quality sliders and make life easier in a home office with many documents, and all sorts of office equipment. The cabinets have wheels for easy relocation, and a removable back panel with cable openings which simplifies the installation of miscellaneous office equipment.

Rolly, Rotary, Rolly Max

The Rolly bookcase on wheels can be relocated easily and is ideal in a reading corner, as a table carrying a lamp, or as a bedside cabinet or flower table.

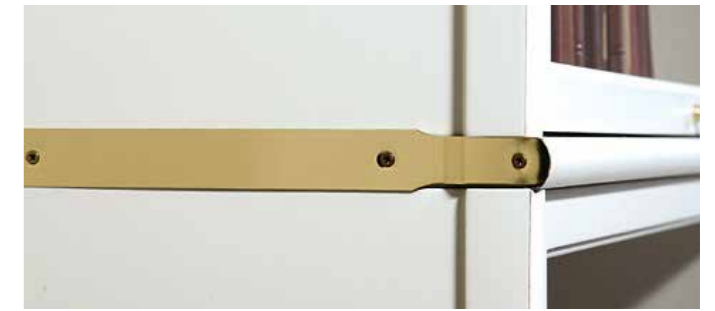
The tall rotating bookshelf (Rotary) has 6.5 metres of shelf area – perfect for anyone who needs a lot of books to be within reach. Rotary is also ideal for a small family library.

Rolly Max is one of the latest additions to the Skano line, combining the functions of a bookshelf and a coffee table.





BLACK with NICKEL moldings



ANTIQUE WHITE with BRASS moldings



LIGHT BROWN with BLACK moldings



WHITE with WHITE moldings



LED lights

You can add LED lights to your display cases to get a more cozy atmosphere in your living space.



NATURAL
01



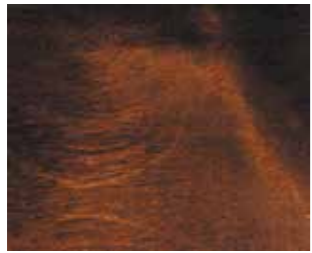
WOODWASH stained
12



OAK stained
13



LIGHT BROWN stained
02



DARK BROWN stained
03



CHESTNUT stained
04



MAHOGANY stained
06



MOCCA stained
16



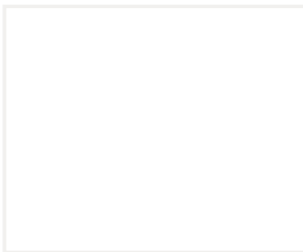
BLACK stained
05



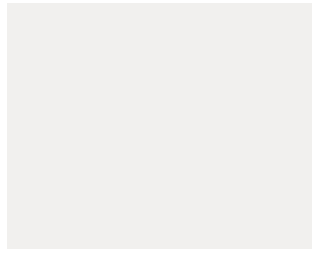
GREEN painted and
patinated
09



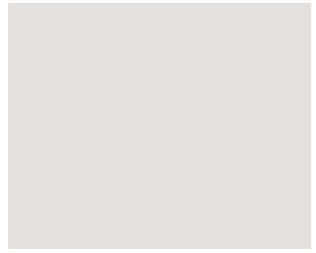
BLUE painted and
patinated
10



WHITE painted
11



ANTIQUÉ WHITE
painted and patinated
08



GREY painted and
patinated
07

Skano Classic items are made from natural birch, which gives its own unique structure and colour for each piece of furniture. All finishing samples in this catalogue are illustrative – the actual colour of products may differ from that shown on photos.

You can also choose different colour doors to those of the main display cases body or different colour table top.

Our Approach

Our forward thinking wood-based engineering solutions create value for our customers in a cost-effective and environmentally sustainable way.

Our products use the highest quality wood resources from Northern Europe. Forests in these latitudes grow slowly giving wood an excellent resistance and external beauty.

All our products are designed for demanding users, who care about the quality and sustainable and integrated use of wood, helping to mitigate climate change on our planet.





This catalogue or parts thereof may not be copied without the permission of Skano Furniture. All photos in this catalogue are illustrative - the actual colour of products may differ from that shown on photos. Skano Furniture and Skano are registered trademarks. Skano Furniture retains the right to make changes in the furniture line without notice. www.skano.com

